



AccexIron

Datasheet

Including:

Overview

Tech Specs



Overview

The AccexIron is designed for more complex projects. With 54 digital I/O pins, 16 analog inputs and a larger space for your sketch.

This gives your projects plenty of room and opportunities.

The board is augmented with L298N monolithic IC, an inbuilt dual full-bridge motor driver capable of driving heavy torque motors.

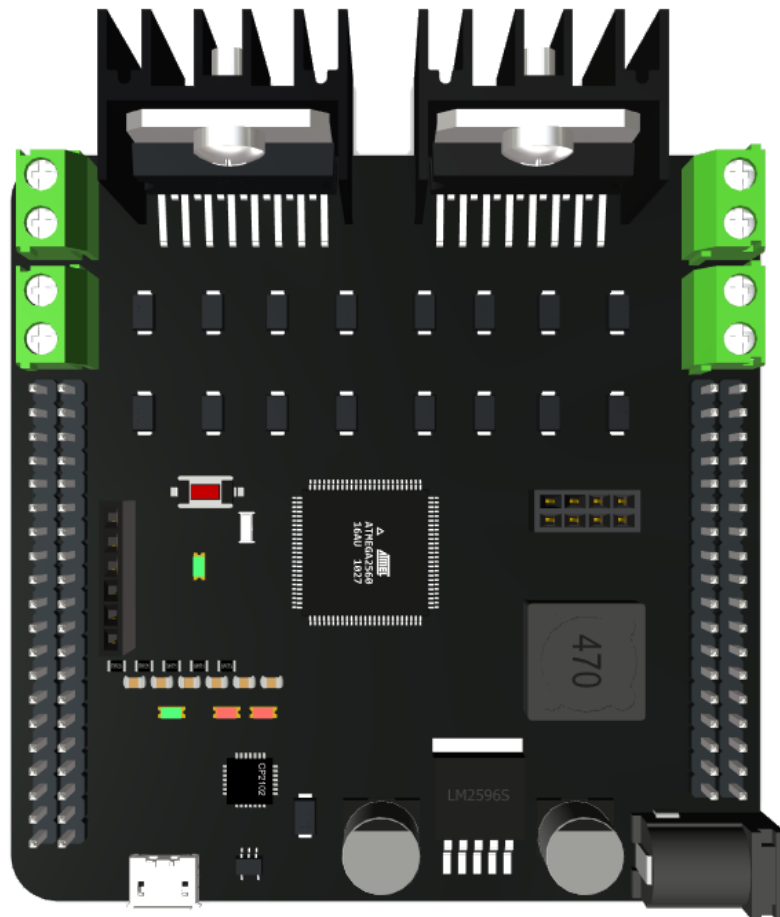
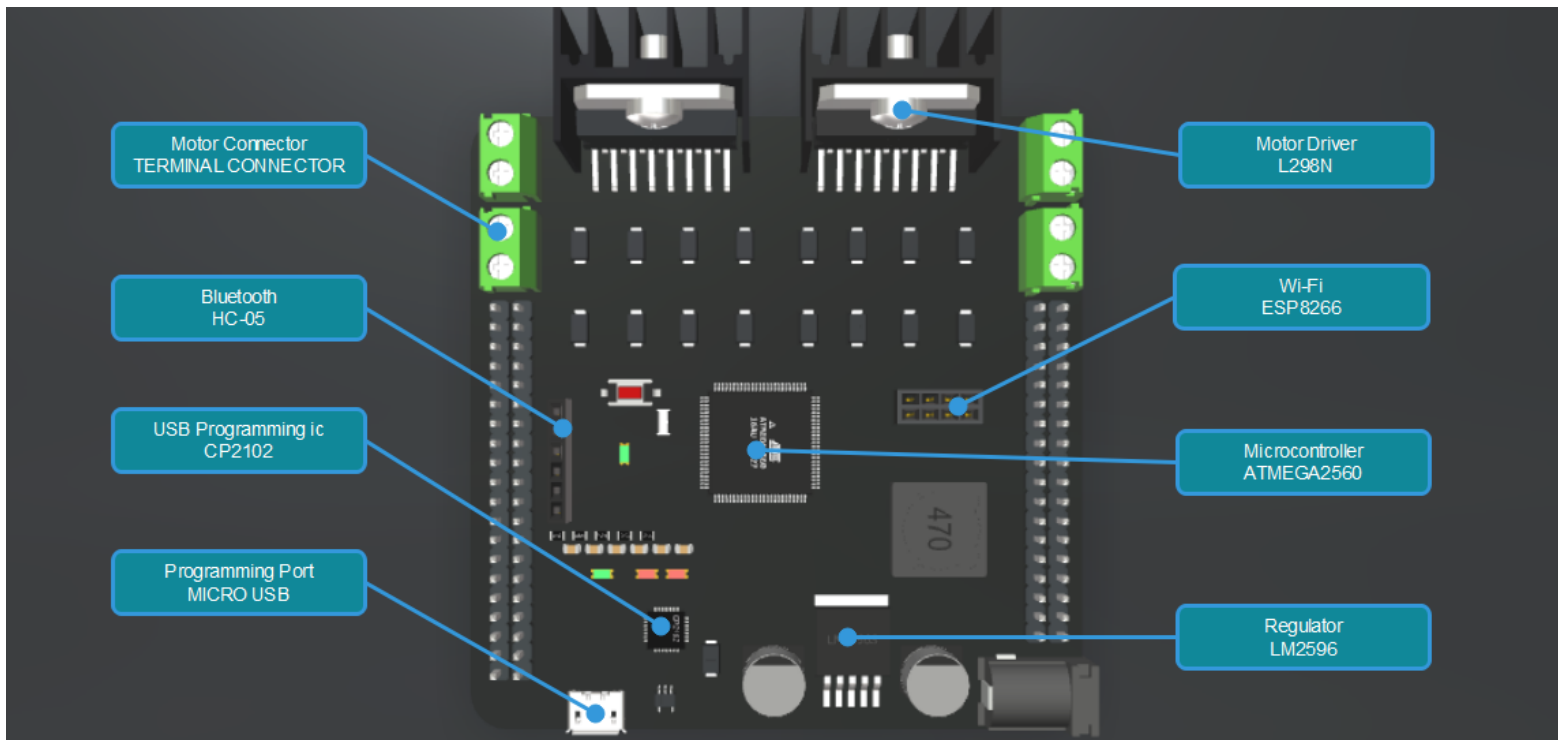


Figure 1: AccexIron Development Board

Tech Specs



➤ Microcontroller	ATmega2560
➤ Operating Voltage	5V
➤ Input Voltage (limit)	6-35V
➤ Digital I/O Pins	54
➤ Analog Input Pins	16
➤ SRAM	8 KB
➤ EEPROM	4 KB
➤ Flash Memory	256 KB
➤ Clock Speed	16 MHz
➤ Motor Driver	L298N
➤ Motor Driver Channels	4

External Wi-fi and Bluetooth Support

